

# Long Ram Power Units 1-1/2 & 3 Ton Capacity

100% American Made.....



**1 PC 20" ZINC PLATED HANDLE INCLUDED**

Capacity (TONS)	Model Number	Repair Kit	Description	Lifting Range		Hole Diameter	Ram Diameter	Base Size	Shipping Weight
				Low	High				
1.5	5-51901	5-577	Small Power Unit	25-5/8"	43-5/8"	0.390	7/8"	5-1/4" x 3-3/8"	16 LBS
3	56064	5-1103	Power Unit	20-3/8"	35-1/2"	0.280	1-3/16"	4-5/16" x 5-7/8"	20 LBS
3	5-51914	5-532	Elevated Pump	36-7/16"	59-3/16"	0.516	1-3/16"	4-5/16" x 5-7/8"	32 LBS.
3	5-51010-8	5-532	U-Card Type	30-1/4"	55"	0.531	1-3/16"	4-5/16" x 5-7/8"	27 LBS,

**American Made**

ORDER ON LINE OR CALL 800 535 2257

# 3 Ton Long Ram Power Units D-51010 SERIES

Capacity (tons)	Model Number	REPAIR KIT 5-532 Description	Lifting Range		Ram	Hole	Base Size	Shipping Weight	
			Low	High	Diameter	Dia.			
<b>ADD TO CART</b>	3	D-51010-C	Utility Jack w /crosssholes single release	24-1/8"	41-1/8"	1-3/16"	0.641	4-5/16" X 5-7/8"	25 LBS.
<b>ADD TO CART</b>	3	D-51010	Utility Jack single release	24-1/8"	41-1/8"	1-3/16"	N/A	4-5/16" X 5-7/8"	25 LBS.
<b>ADD TO CART</b>	3	D-51010-2P	Utility Jack w/2 piece release	24-1/8"	41-1/8"	1-3/16"	N/A	4-5/16" X 5-7/8"	25 LBS.
<b>ADD TO CART</b>	3	D-51010-C2P	W/crosshole & 2 piece release	24-1/8"	41-1/8"	1-3/16"	0.641	4-5/16" X 5-7/8"	25 LBS.

100% American Made.....



**D-51010-(2P)      D-51010-C2P**

1 PC 20" ZINC PLATED HANDLE INCLUDED

### OPTIONAL PARTS FOR D-51010 SERIES LONG RAM JACKS

\*\* Call for pricing and shipping charges

**Part No. 2-58204 - CLEVIS  
D-51010 ONLY**



**Part No. 10-11201 - LOAD REST  
D-51010 ONLY**



---

**BASE BRACKET—4-56006**  
The solution for mounting American made D-51010 (3 ton utility hydraulic long ram jack) to foreign made cranes.

*These units are supplied exactly as shown with NO holes in the flat plate.*



**CORRECT PLACEMENT  
OF BASE BRACKET**



**INCORRECT PLACEMENT  
OF BASE BRACKET**

**2P** - Most long ram jacks and all power units have a two piece release. This feature gives the user better control of the ram's rate of descent



Other long ram jacks have the option for either a single piece or a two piece release.



**American Made**

ORDER ON LINE OR CALL 800 535 2257

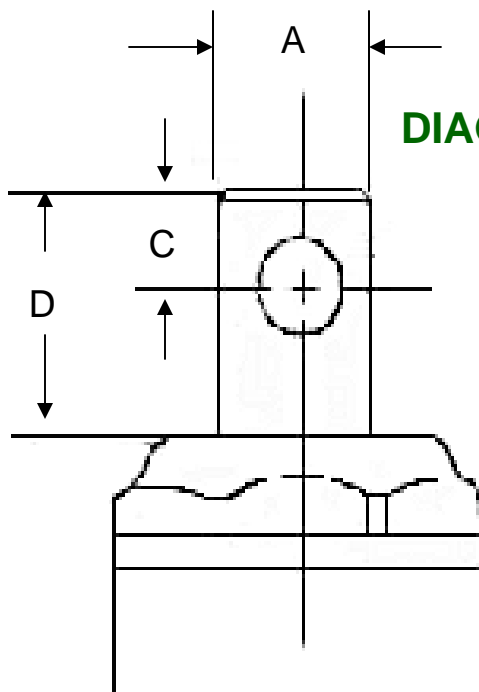
# DIMENSION INFORMATION

JACK MODEL	SEE DIAGRAM B A	SEE DIAGRAM A B	SEE DIAGRAM B C	SEE DIAGRAM B D	SEE DIAGRAM A E	SEE DIAGRAM A F
56064	1.18	0.28	0.65	2.12	2.75	17.625
56091	1.375	0.265	0.437	1.06	3	19.25
56100-C	1.375	0.641	0.625	1.62	3	24
5-51901	0.868	0.39	0.312	4.87	2	20.75
5-51902	1.375	0.64	0.625	4.12	3	26.75
5-51905	1.625	0.89	0.75	4	3.5	27
5-51914	1.18	0.516	0.688	10.12	2.75	26.625
5-51010-8	1.18	0.531	0.625	4	2.75	27
D-51010 SERIES	1.18	0.64	0.68	1.68	2.75	22.5



## DIAGRAM A

- A = RAM DIAMETER - **SEE DIAGRAM B**
- B = HOLE DIAMETER
- C = DIMENSION FROM TOP TO CENTER LINE - **SEE DIAGRAM B**
- D = EXPOSED RAM ABOVE TOP OF RESEVOIR HEAD - **SEE DIAGRAM B**
- E= RESERVOIR DIAMETER
- F= MEASURE BOTTOM OF BASE TO TOP OF RESERVOIR HEAD



## DIAGRAM B

# Long Ram Power Units 5 & 8 Ton Capacity

**ADD TO CART**



**5-51902  
5 TON**

**ADD TO CART**



**56100-C  
5 TON**

**ADD TO CART**



**56091  
5 TON**

**ADD TO CART**



**5-51905  
8 TON**

100% American Made.....

**1 PC 20" ZINC PLATED HANDLE INCLUDED**

Capacity (TONS)	Model Number	Repair Kit	Description	Lifting Range		Hole Diameter	Ram Diameter	Base Size	Shipping Weight
				Low	High				
5	5-51902	5-535	Heavy Duty Unit	30-13/16"	53-13/16"	0.640	1-3/8"	4-9/16" x 6-1/4"	35 LBS.
5	56100-C	5-1102	Power Unit	25-5/8"	45-1/2"	0.640	1-3/8"	4-9/16" x 6-1/4"	28 LBS.
5	56091	5-1104	Power Unit	20-1/8"	36-5/8"	0.265	1-3/8"	4-9/16" X 6-1/4"	24 LBS
8	5-51905	5-580	Large Power Unit	30-13/16"	53-13/16"	0.890	1-5/8"	6-1/2" x 5-1/8"	45 LBS

American Made

ORDER ON LINE OR CALL 800 535 2257