

Hydraulic Floor Jacks 4, 10 & 20 Ton Capacity

100% American Made.....



SERVICE JACKS—LONG CHASSIS

FEATURES:

100% AMERICAN MADE PARTS AND MATERIAL

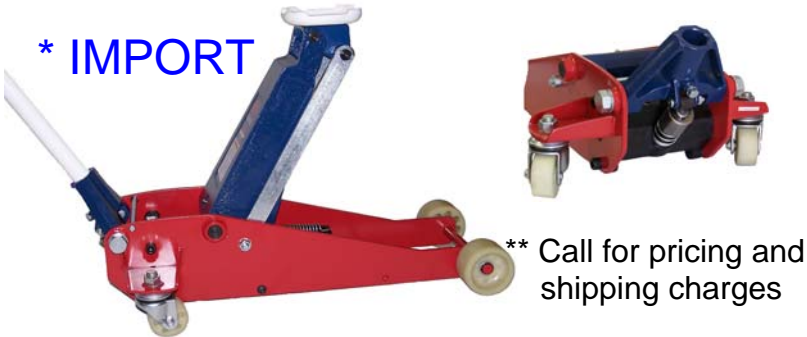
- Counter balanced handle.
- Three position handle lock.
- Low silhouette.
- Single speed pump for low maintenance.
- Handy foot pedal for quick engagement of load.
- Positive release lever for controlled descent of the load.
- Engagement of safety latch on release lever prevents load from being lowered prematurely.
- Heavy duty long life construction.



Capacity (TONS.)	Model Number	Low Height	Lift	Raised Height	Chassis Height	Frame Length	Handle Length	Caster Diameter	Front Wheel Diameter	Saddle Size	Shipping Weight
4	D-51223	5-1/2"	20-3/4"	26-1/4"	7-1/4"	58"	40"	2-1/2"	5" x 2-1/4"	8-5/8"	212 LBS.
10	D-51224	7"	18-1/2"	25-1/2"	10-1/4"	66"	40"	4"	7-5/8" x 3-1/2"	8-7/8"	356 LBS.
20	D-51225	7-1/2"	18-3/4"	26-1/4"	10-1/4"	69"	40"	4"	7-5/8" x 3-1/2"	9"	531 LBS.

2-TON SHORT CHASSIS FLOOR JACK D-51226 * IMPORT

- It is the considered opinion of U.S. Jack that this piece of equipment will meet your expectations in quality and performance.

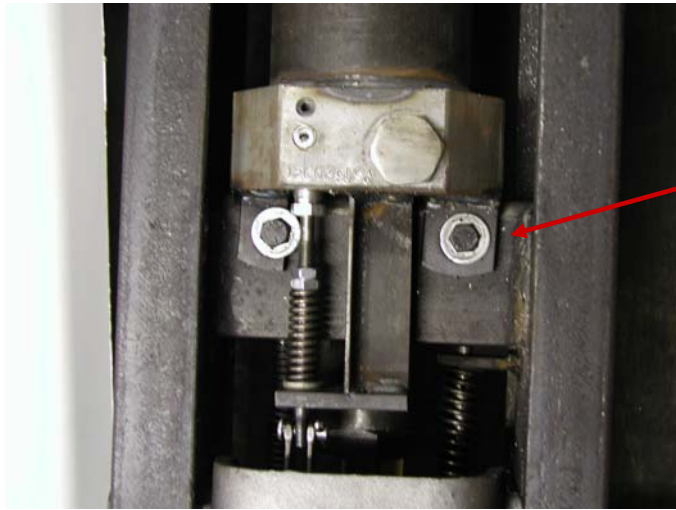


FEATURES:

- 3 - 1/2" Low lift height.
- Mechanical stop prevents damage to pressure cylinder at maximum extension.
- Long removable two piece handle.

Capacity (TONS.)	Model Number	Lift Height		Overall Dimensions		Frame Height	Handle Length	Wheel Diameters		Saddle Size	Shipping Weight
		Low	High	Length	Width			Caster	Front		
2	D-51226	3-1/2"	20-3/8"	28-3/4"	15-1/4"	6-7/8"	49"	2-3/8"	3-5/8"	5-3/8" SQ.	102 LBS.

D-51224 NEW STYLE WA-75B
OLD STYLE WA-75A

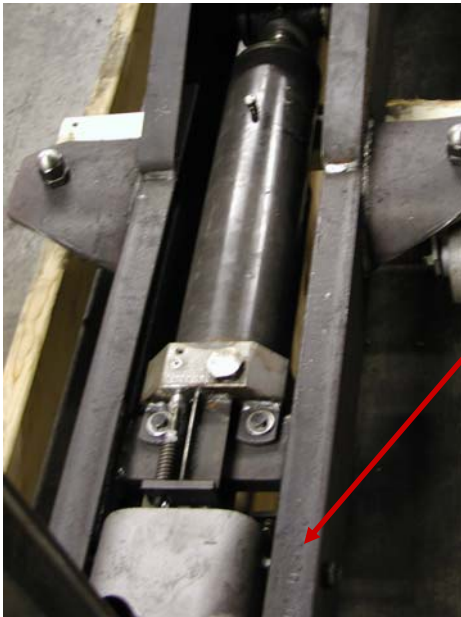


D-51224 NEW STYLE (WA-75B)

Note: The power unit has a square base. Two bolts hold the power unit (AS-24485A CYLINDER ASSEMBLY)

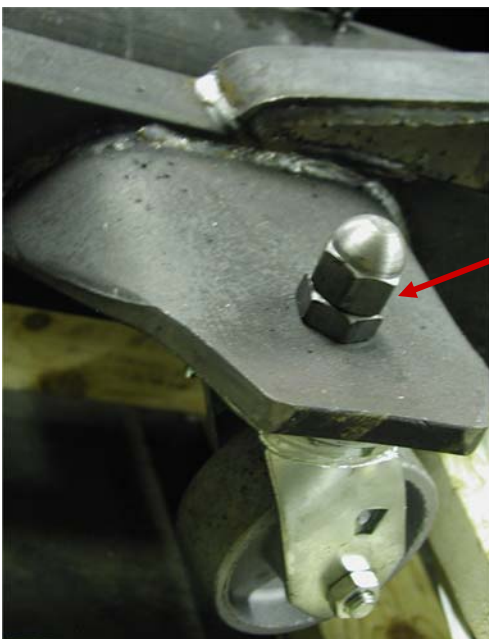
D-51224 OLD STYLE (WA-75A) There is a pin the secures the power unit.

AS-24485A (CYLINDER ASSEMBLY) WILL **NOT** FIT THE OLD STYLE WA-75A



YOU CAN NOT ADAPT THE NEW STYLE POWER UNIT TO THE OLD STYLE DESIGN

D-51224
LOCATION OF U.S. JACK SERIAL NO.



**D-51224 NEW STYLE (WA-75B)
Caster Assemblies**

- **New Style WA-75B** S-24627 BOLTED ON
- **Old Style WA-75A** - AS-24621